

Technical Sheet

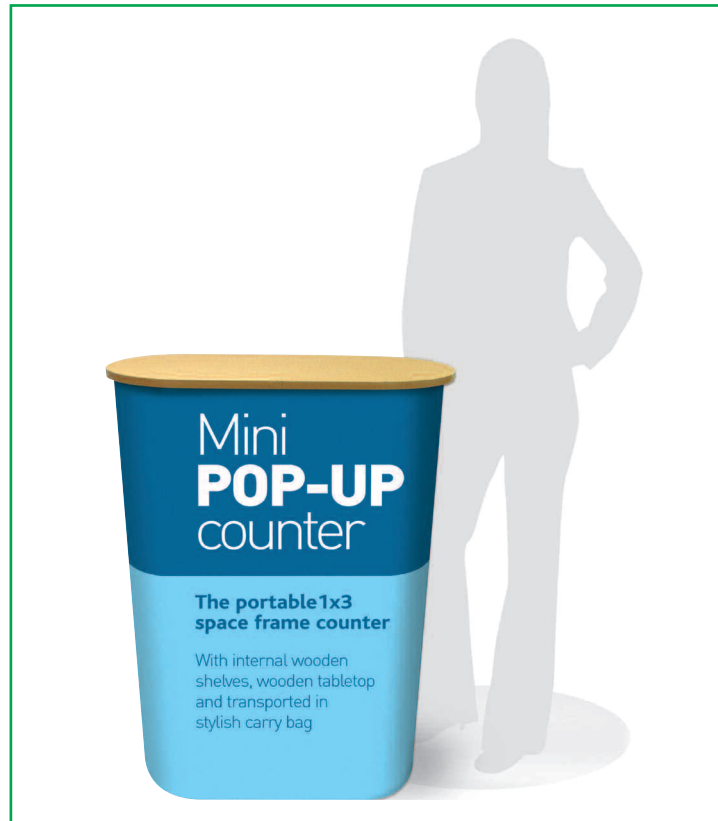
Straight 1x3 Mini Pop Up Counters Specifications

The mini pop up counter is an elegant, high quality, rapid erect, self supporting anodised aluminium framework. There is a simple fully magnetic rail connection, laminated counter top, shelved and the kit comes complete with carry bag and magnetic tape. The kit is quality assured and comes with a 12 month guarantee.

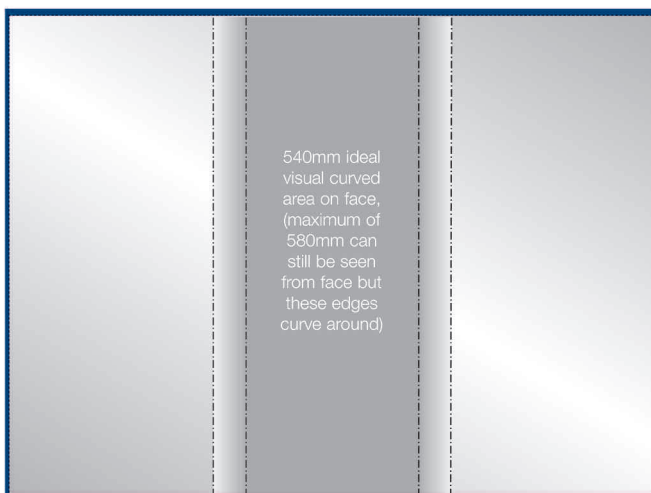
Standard Height: 1035mm
Standard Width/Depth: 685mm W x 365mm D
Kit Weight (Net): 11.2kgs



Counter Carry Bag



Graphics



Visible graphic area
1330 x 1000mm

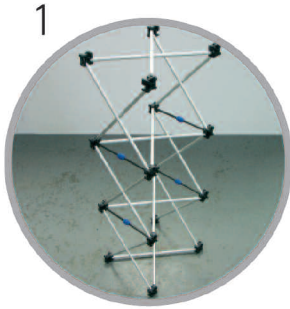
Image bleed area
1350 x 1020mm

1330mm x 1000mm



Graphics Carry Bag

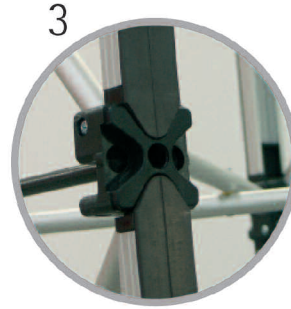
Straight 1x3 Mini Pop Up Counters Specifications



Erect structure ensuring blue magnetic connectors snap together.



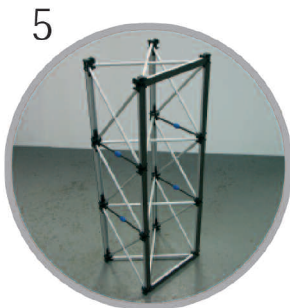
Affix vertical magnetic rails...



into their magnetic locators



The rails not only strengthen the structure but will take the graphic wrap



The assembled structure should now look like this.



Align the vertical graphic edge with the central line on the vertical magnetic rail at the back and affix.



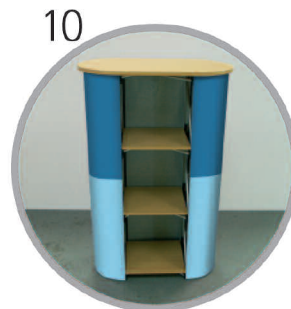
Unroll the graphic and work your way round the front of the structure, ensuring the magnetic tape on graphic rear, affixes to exact position on the vertical magnetic rails.



Lower the wooden table top onto the four locating studs located on the frame top.



Drop the 3 wooden shelves into position within the structure to complete your Mini Pop Up Counter



Your counter is now ready for all types of promotional work. To dismantle the pop up counter, reverse the assembly procedure. Ensure graphic is rolled up - image side facing outwards.

