

Curved 2x2 Pop Up Counter Specifications

The pop up counter is an elegant, high quality, rapid erect, self supporting anodised aluminium framework. There is a simple fully magnetic rail connection, laminated counter top, shelved and the kit comes complete with carry bag and magnetic tape.

The kit is quality assured and comes with a 12 month guarantee.

Standard Dimensions: Width 1305mm x Height 906mm x Depth 505mm
Kit Weight (Net): 19.4kgs

Accessories



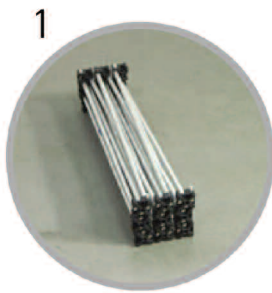
Counter Carry Bag



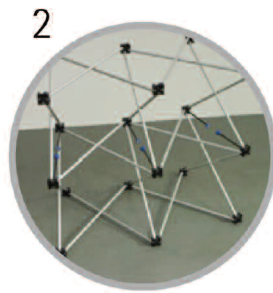
Optional Graphics Carry Bag



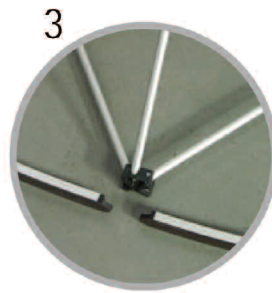
Pop Up Counter - Assembly Instructions



1 Remove pop up frame from carry bag.



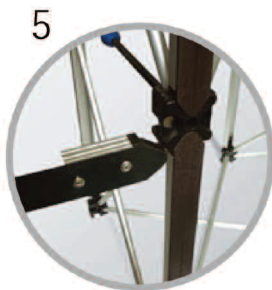
2 Erect structure ensuring table top locating studs are upper most.



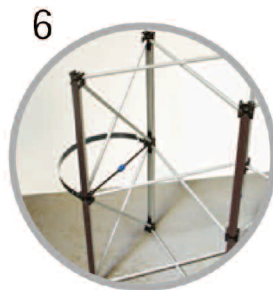
3 Affix horizontal magnetic rails (curved) at bottom of structure.



4 Affix vertical magnetic rails (straight).



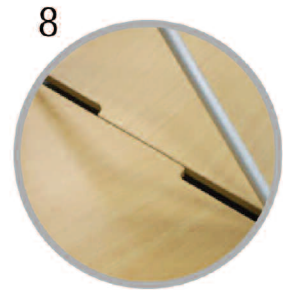
5 Affix flexible magnetic rails to centre hubs to form curve shape, either end of pop up frame.



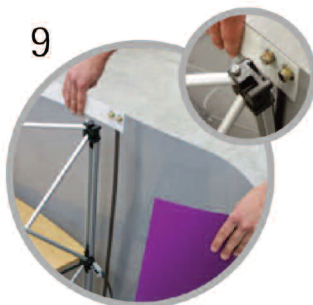
6 The assembled structure is now ready to accept the shelves.



7 Insert the lower and middle shelves. Slightly angle the shelves to assist location.



8 The shelves align together as illustrated above.



9 Unroll the graphic and locate the magnetic buttons into the top of the structure, ensuring magnetic tape aligns to the vertical rails.



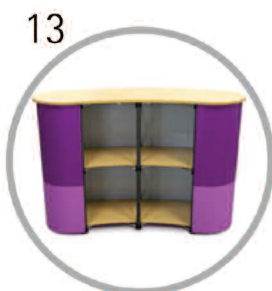
10 Affix both ends of the graphic to the rear of the system, aligning the magnetic buttons and tape.



11 Open up the laminated table top and lower onto the four locating studs.



12 Secure the table top in place by wrapping the velcro (on the underside) around the frame tubing. **WARNING** - the top must be secured every time the unit is assembled - **MANDATORY**.



13 Your counter is now ready for all types of promotional work. To dismantle the pop up counter, reverse the assembly procedure. Ensure graphic is rolled - image side facing outwards.

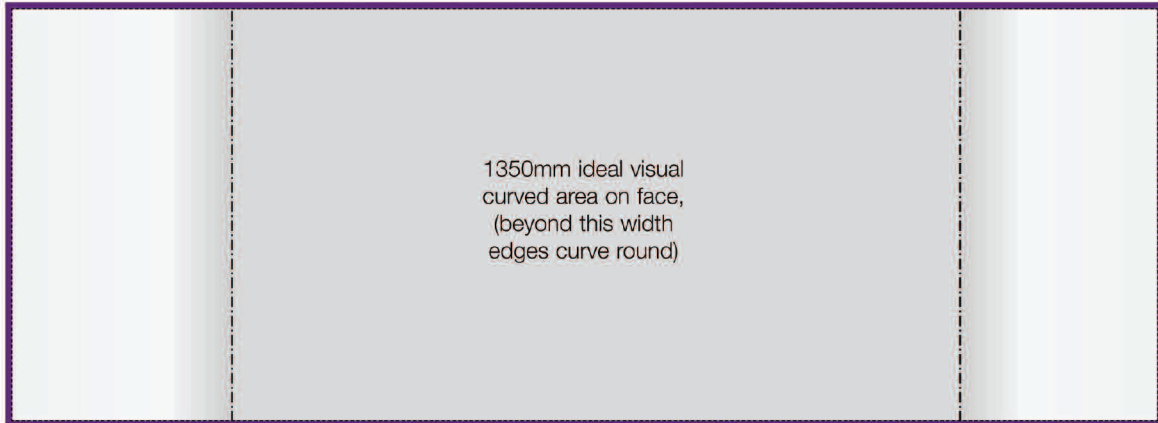


Pop Up Counter - Graphics Set Up

2420mm x 877mm

Visible graphic area
2420mm x 877mm

Image bleed area
2440mm x 897mm



Hanging Rail / Magnetic Tape Placement

