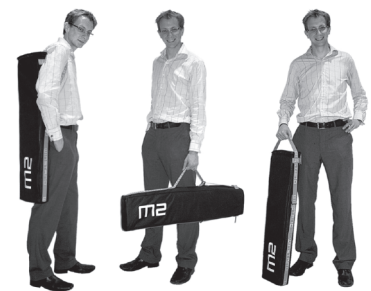


Technical Sheet

Expand M2 Specifications

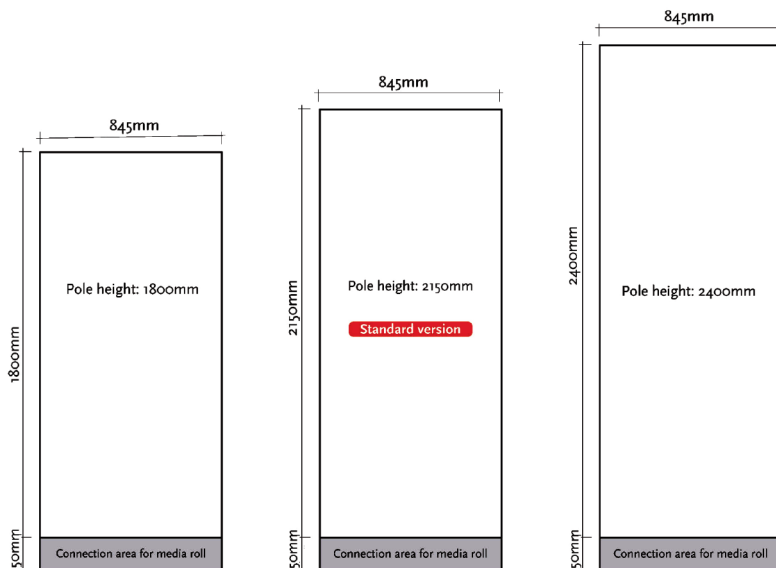
The Expand M2 is the first banner system to offer a simple and fast way to replace the graphic. No need to unscrew the base or deal with roller tension systems. You simply lift out the old graphic and slot in a new one. The Expand M2 is available in black and is supplied with our Multistrap™ bag. This makes it easy for you to transport your M2 and the padding keeps it safe.

Panel Width:	850mm
Panel Heights:	1800mm (Pole Length) / Visible graphic 1815mm
	2150mm (Pole Length) / Visible graphic 2115mm
	2400mm (Pole Length) / Visible graphic 2415mm
Kit Weight	4.7Kg



Multistrap™ bag.

Graphics



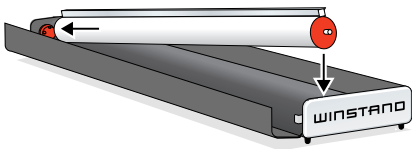
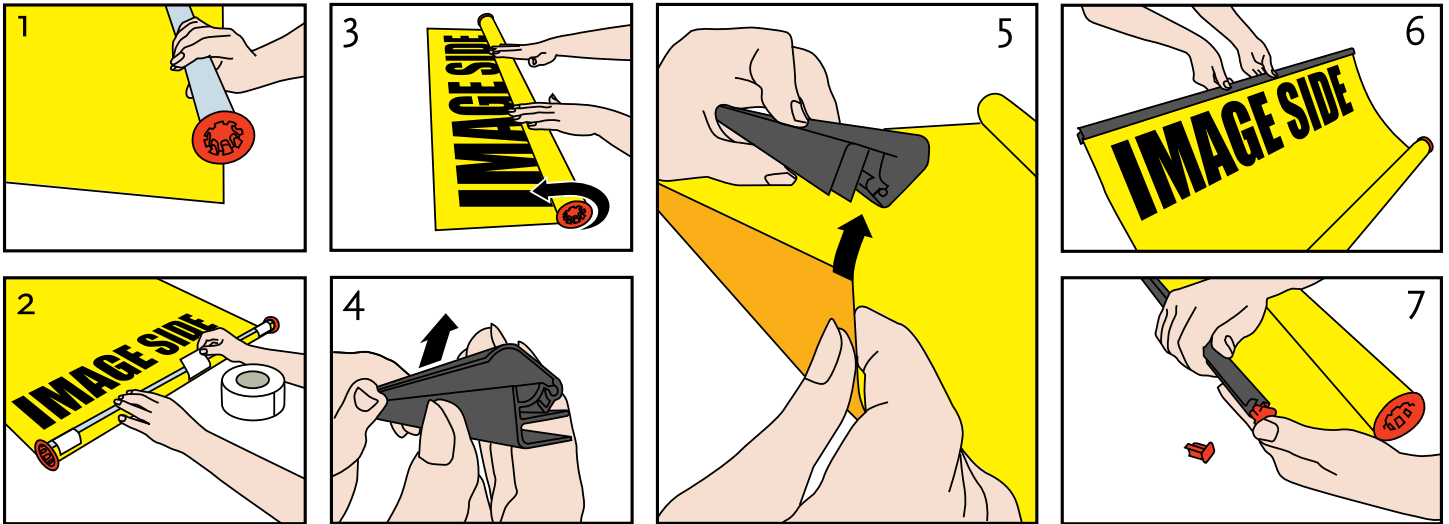
Standard Graphic Sizes

1800mm x 845mm

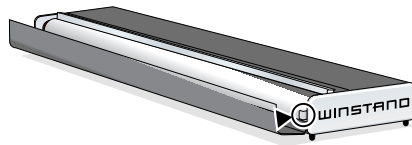
2150mm x 845mm

2400mm x 845mm

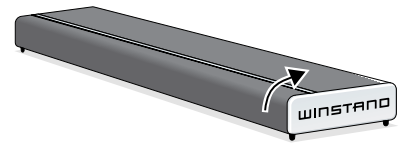
Expand M2 Mounting Instructions & Set Up Guide



Insert left side on to connection.
Slide right side down into slot.



Lock media into M2 base by pressing
locking tab inwards.



Close front section of M2 base.

